

Michael G. Karni Scholarship

at the Immigration History Research Center

for grants-in-aid of research

The Michael G. Karni Scholarship award is intended to help defray expenses of visiting professors, lecturers, or graduate students from the United States or abroad using the archival sources of the University of Minnesota's Immigration History Research Center (IHRC), with emphasis on projects relating to the Finnish American experience.

The award is a memorial to Michael Karni, pioneering historian and publisher of Finnish American ethnicity who was chiefly responsible for the initial development of the Finnish American collection at the IHRC. The fund has been made possible through gifts from friends and members of the Karni family along with other supporters of Finnish American scholarly activity.

Terms of Award: Up to \$850 to assist with travel and research-related expenses associated with a term of residence at the IHRC of not less than two full weeks (10 business days) of research.

Who May Apply?: Post-doctoral scholars and graduate students working in fields of migration history, ethnic studies, cultural studies, and other areas for which the IHRC's extensive holdings on Finnish immigration and ethnicity are of special significance. (Information about these sources is available on the Center's Web site at: <http://www.ihrc.umn.edu>.)

Selection Criteria:

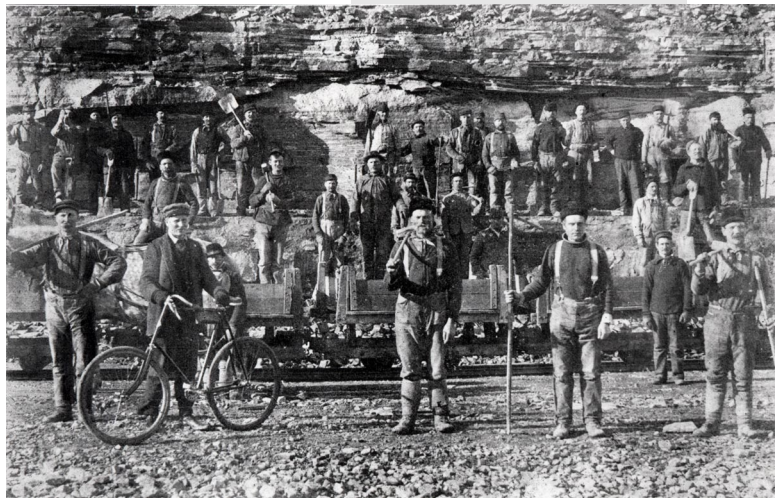
- Demonstrated connection between research needs and specific materials at the IHRC.
- Evidence of excellent writing skills and concrete plans for publication (or thesis/dissertation schedule).
- Finnish language proficiency (for projects requiring sources in Finnish).

Application Materials:

- Proposal of no more than 2 pages describing research project and collections to be consulted.
- Current curriculum vitae.
- Two letters of reference from current or recent professors or colleagues.
- Brief estimate of expenses and proposed use of funds.

Send application materials to:

Karni Scholarship Committee
c/o Haven Hawley, Program Director
Immigration History Research Center
University of Minnesota
311 Andersen Library
222 21st Ave. S.
Minneapolis, MN 55455



Miners with tools near Jacobsville, Michigan. Published 1904[?].

Fall Deadline: November 1 (for research travel January 1 through December 31 of the following year)